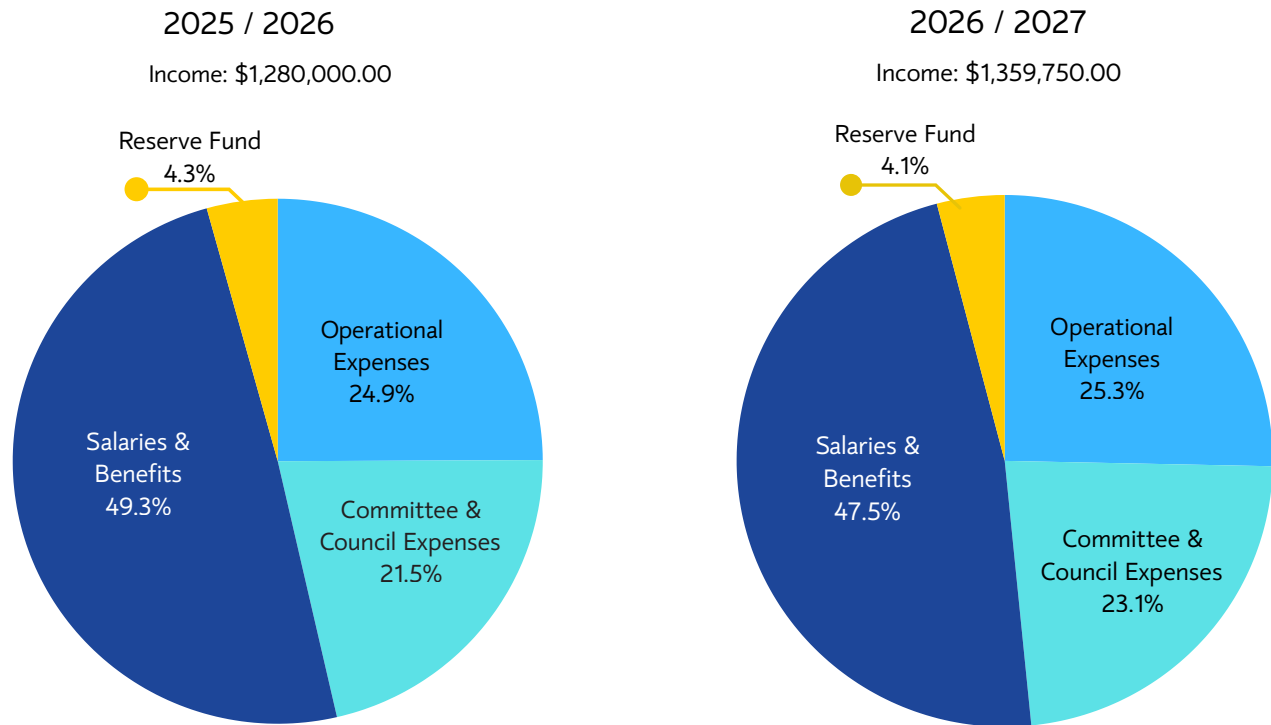


College of Paramedics of Manitoba Budget Allocations



Following the fee change, the net change in income is \$79,750. As reflected in the charts, a larger portion of next year's budget is allocated to operating expenses and Council and committee support, enabling the continued advancement of the College's strategic priorities and the oversight of paramedic practice in Manitoba.

Frequently Asked Questions

Q. Why do I have to pay a fee?

A. Part of being a self regulated health profession is the overseeing body, or college, is independent of external funding. This means the operating budget comes from registration fees.

Q. Where does the money go?

A. The pie charts above outline where the money from registration fees is being used.

Q. Why is there a reserve fund making interest? Can't that be used to cover extra costs?

A. Responsible organizations save money for contingencies such as lawsuits, capital projects like changes in expensive software or office space. Learn more by viewing policy EE-4, Investment and Reserve Funds.

Q. Why are salaries almost half the budget?

A. This is common in most organizations. At CPMB we have 5.5 full time staff, in order to ensure that our team has the expertise to serve the mandate of the college and provide our registrants with the best possible support, our salaries and benefits must be on par with other similar organizations.

