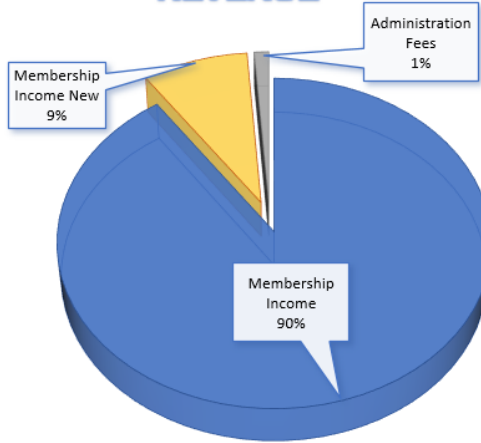


College of Paramedics of Manitoba

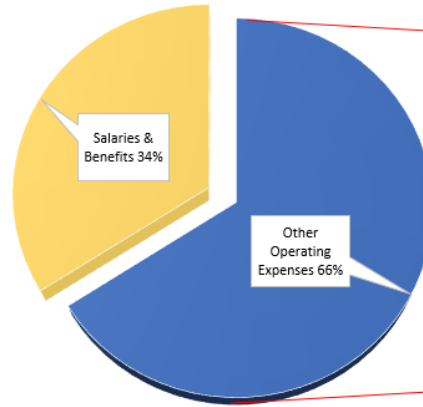
* (Finances at a Glance) *

April - September 2021 (ACTUALS)

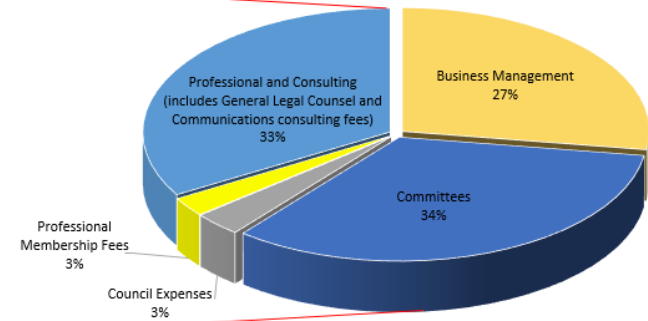
REVENUE



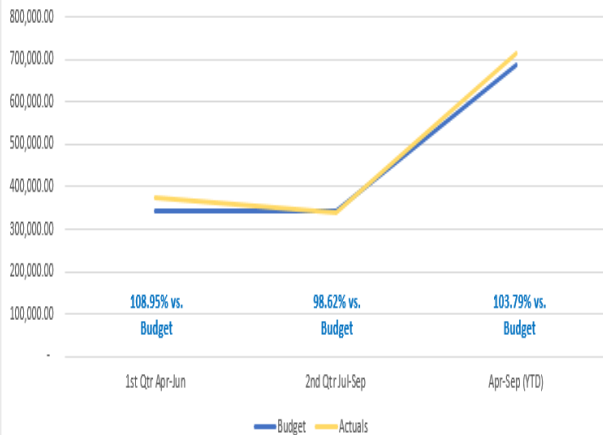
TOTAL EXPENSES



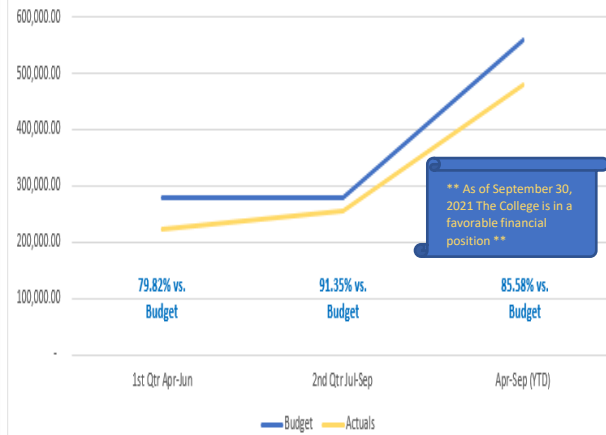
OTHER OPERATING EXPENSES



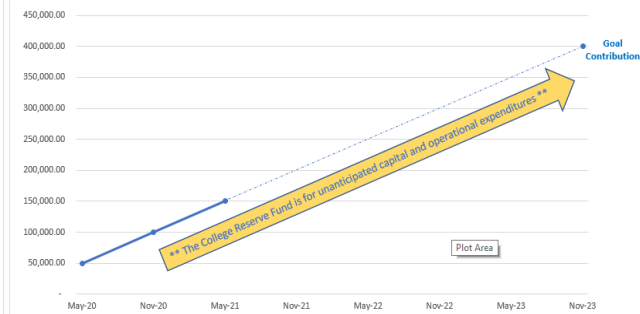
April - September 2021 (Funding & Recoveries) Actuals vs. Budget



April - September 2021 (Expenses) Actuals vs. Budget



Contribution to Reserve Funds



College of Paramedics of Manitoba

Protecting public interest through regulatory excellence in paramedicine

collegeparamb.ca